

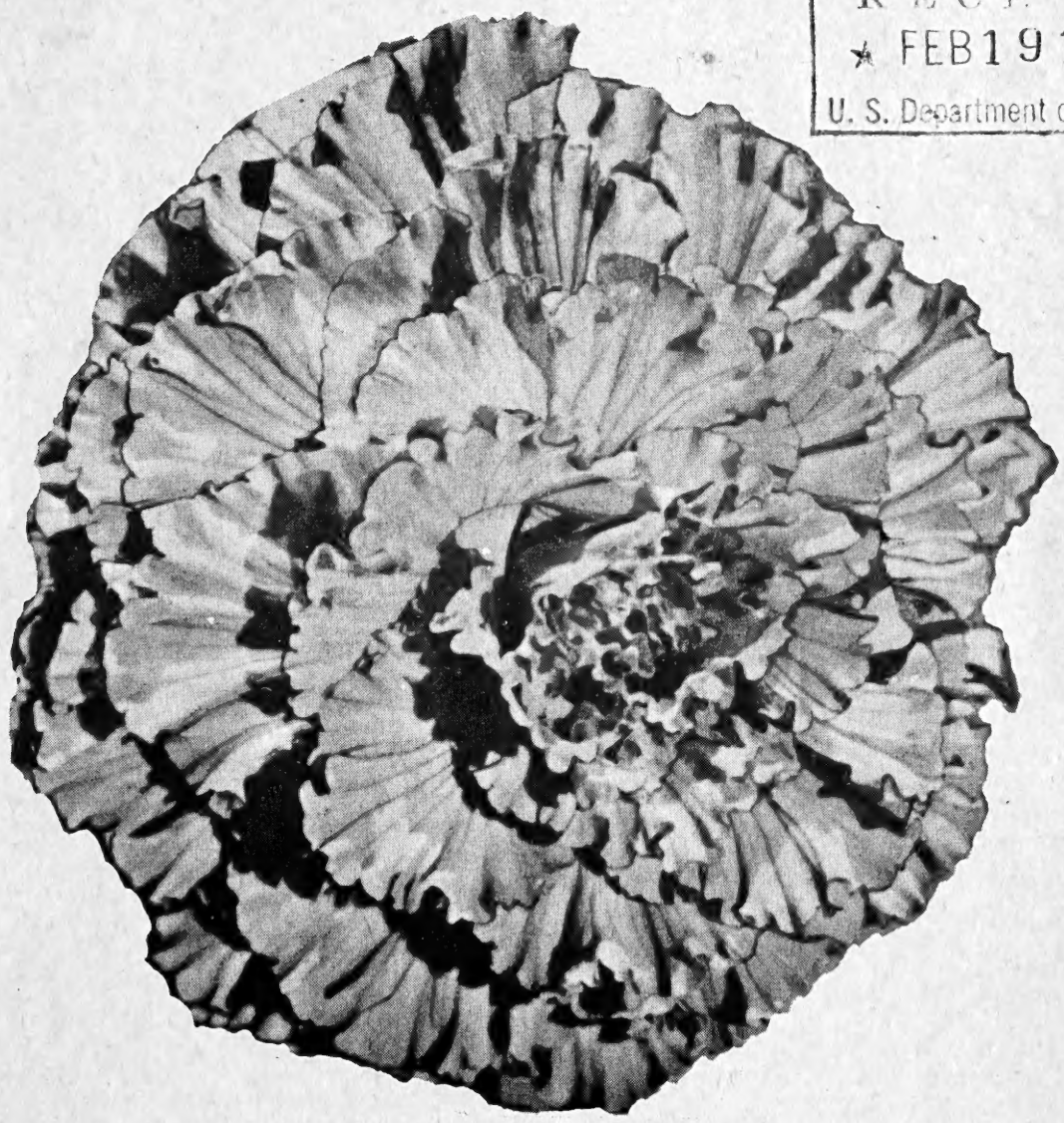
62

[1957]

Jr

TUBEROUS BEGONIAS
HEMEROCALLIS (DAYLILIES)

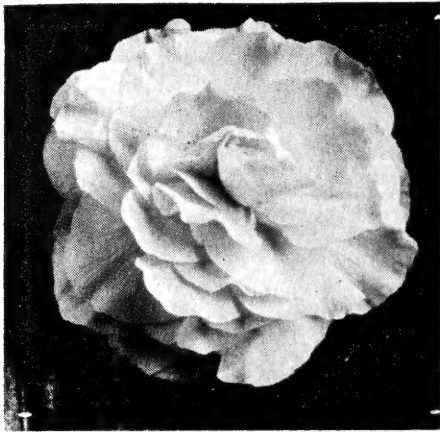
LIBRARY
 RECEIVED
 ★ FEB 19 1957
 U. S. Department of Agriculture



WILSHIRE GARDENS

HOQUIAM

WASHINGTON



TUBEROUS BEGONIAS

SUPERIOR WEST COAST STRAIN

Tuberous begonias are growing in popularity each year because more and more people are finding that the luxuriant, expensive-looking plants are not so difficult to grow as they had imagined. Begonias are ideal in any shady spot in your yard, or in pots, hanging baskets and porch boxes. Start the tubers inside in flats in early spring. Move outside in large pots or baskets or to the open ground when danger of frost is over. Complete growing instructions are included with each order.

LARGE SIZE TUBERS:

45¢ each 10 for \$4.25

DOUBLE CAMELLIA - This is the most popular type, having large double flowers resembling a camellia or rose. Colors are white, pink, rose, yellow, blush, orange, dark red, salmon, American Beauty and flame.

DOUBLE PICOTEE - Flowers of the same beautiful form as the camellia type but the color is two-toned, the center light, the picotee edge pink, salmon or red.

CARNATION TYPE - Full double type with each petal fringed like a carnation. Colors: White, pink, yellow, scarlet and salmon.

DOUBLE ROSEBUD - Exquisite flowers resembling perfect rosebuds, with beautiful two-toned pastel shade coloring. Mixed colors.

CRESTED TYPE - Beautiful show type plants with large, strongly crested blooms. Mixed colors only.

MARMORATA - Double camellia flowered begonias beautifully mottled red and white.

MULTIFLORA - An extremely free-blooming variety. Many bright colors, in mixture.

HANGING BASKET TYPE

A very attractive type having double flowers similar to the Camellia type. They should be planted in window boxes, hanging baskets, pots on pedestals, or a shady place in the rock garden. They are very showy, covered with masses of blooms.

To those of you who enjoy the newest and finest we offer the following varieties....

RUFFLED CAMELLIA TYPE

This type is the result of crossing the Camellia and Carnation types. The petals of the flowers are beautifully ruffled and scalloped, no two plants having exactly the same flowers as to ruffling, tinting and fullness or depth of bloom.

Colors: white, yellow, salmon, rose, scarlet, dark red.

Large tubers 50¢ each \$5.00 per dozen

RED TRIUMPH - Exceptionally large, beautifully ruffled Double Camellia type flowers with velvety textured ruby-red petals.

Each \$1.00 3 for \$2.75, \$10.00 per dozen

AUTUMN GLOW - A large crested type, the crests of which are copper, the petals apricot. The flowers are huge, sometimes measuring 10" across.

Each \$1.00 3 for \$2.75, \$10.00 per dozen

SUNSET - Very large frilled type, the center light copper, the frilled edges scarlet.

Each \$1.00, 3 for \$2.75, \$10.00 per dozen



BULBS GROWN IN THE MILD CLIMATE AND FERTILE SOIL OF THE WEST COAST
ARE THE WORLD'S FINEST

GLOXINIAS

FINEST WEST COAST STRAIN

According to a recent poll, Gloxinias, next to African Violets are the most popular of all flowering plants of this type in America today. The leaves of the plants are large and velvety, the flowers on well grown plants are many and measure up to 4 inches and more in diameter. It is a thrilling experience to watch each bud as it enlarges and unfolds. The colors too are gorgeous, shades of deep rose and red, velvety purples, pure white, with spots, veins, and rims of contrasting colors. Tubers should be started in January or February.

Complete growing instructions with each order.

Large tubers 60¢ each 3 for \$1.55

ETOILE DE FEU	Scarlet
EMPEROR FREDERICK	Scarlet and white
BLANCHE DE MERU	Rose
PRINCESS ELIZABETH	Blue and white
EMPEROR WILLIAM	Violet and white
ROI DES ROUGES	Crimson

Collection one each of above six... \$3.25

TIGRINA - A spotted and netted variety in beautiful shades of blue, pink and scarlet.

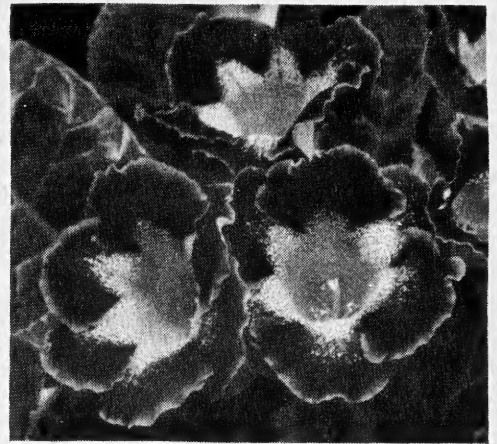
ACHIMENES



A plant closely related to the African Violet and grown under similar conditions, or planted in pots or boxes in shady places out of door, will be covered with large violet shaped flowers of blue purple or purplish rose. It blooms about the same time as Tuberous Begonias and the tubers are carried over winter much in the same manner. Tubers are small and should be planted in groups.

Complete growing instructions with each order.

Achimenes Mexicana - lavender	per doz.	\$1.50
Achimenes Mexicana - light blue	" "	1.80
Little Beauty - purplish rose	" "	1.80



GLOXINIAS

ACIDANTHERA

FRAGRANT GLADIOLUS



Charming and graceful bulb flower. The mass of six or more tubular flowers suspended on gracefully arching 2-foot stems is most distinctive. Maroon-black markings accentuate the creamy white petals. A rarity but nevertheless a bulb of easiest garden handling. Plant, dig and store as you would gladiolus.

3 for 35¢; 12 for \$1.30;
25 for \$2.50; 100 for \$9.00

WILSHIRE GARDENS SPECIAL SOIL

For Gloxinias, Achimenes and other Potted Plants

Per 2-Quart Package - 75¢

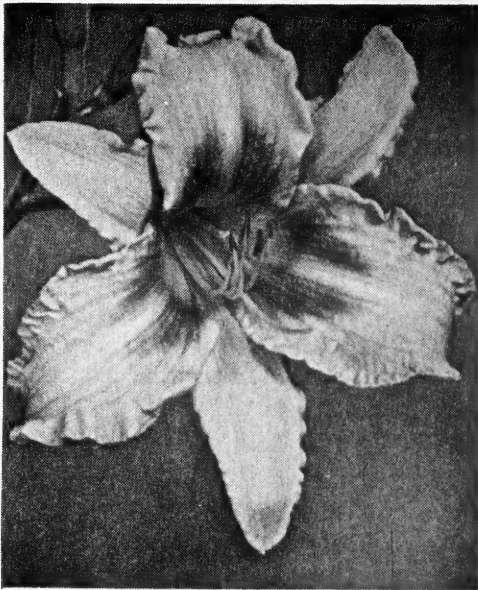
East of the Mississippi add 15¢ per qt.

WISCONSIN HORTICULTURAL PEAT

For starting tubers

Per 2-Quart Package - 50¢

A SELECT LIST OF FINE DAYLILIES



- AUGUST PIONEER - Chrome yellow with a red flush. Late \$.50
 AUTUMN RED - Handsome rich velvety red. July-August..... .50
 BABY TEARS - Small dainty rose red with ruffled petals..... 1.00
 BARONET - Medium size brick red with orange throat..... .50
 BEACON - Waxy trumpet shaped flower of deep orange. Tall..... .50
 BERTRAND FARR - Very large rosy peach with darker veinings..... .75
 BLACK CHERRY - Deep red overlaid with a dark luster. Recurving..... .75
 BLACK FALCON - Large ruffled mahogany red, shallow yellow cup..... 1.00
 CABALLERO - Vermillion red and gold bi-color. One of the best..... .75
 * CATHEDRAL TOWERS - Soft yellow with rosy brown markings..... 2.00
 * COLONIAL DAME - Large beautiful flower in shades of apricot..... 1.50
 * GARNET ROBE - One of the best of the reds. Rich deep garnet..... 1.50
 * GAY TROUBADOUR - A very striking red a cream yellow bi-color..... 1.00
 * GEORGIA - Delicate peach pink overlaid with buff. Very fine..... 1.00
 GRANADA - A lovely combination of tan and red-brown..... .75
 * HESPERUS - A very tall, large flower of lovely lemon-chrome..... .50
 HONEY REDHEAD - Bright rose-red with border of pale yellow..... .50
 HYPERION - Large flowered pale yellow. One of the best..... .50
 KANAPAHA - Entire flower raspberry red, no markings. Striking..... .75

OUR PINK and PASTEL COLLECTION

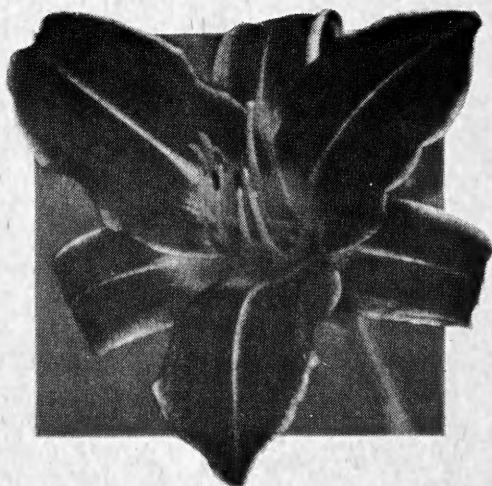
Rosalind
 Hesperus
 Pink Charm
 Hyperion
 Mary Florence
 Linda
 Su-Lin

One Large Plant of Each
 7 plants..... \$4.00
 3 plants of each \$10.00

Varieties marked * are on the 1955 List of 100 Best Daylilies

FOR BEST AND LATEST INFORMATION, JOIN THE HEMEROCALLIS SOCIETY

- LINDA - Pastel pink over golden yellow, sepals yellow \$.50
- MARTHA WASHINGTON - A lovely dainty shade of old rose..... 1.50
- MARY FLORENCE - Large waxy flowers of apricot buff..... .50
- MARY GUENTHER - An outstanding bi-color, carmine red and yellow..... .50
- MRS. B. F. BONNER - Beautiful Large pale yellow flower. Tall..... .75
- * MRS. HUGH JOHNSON - Fiery red blooms on 3-ft. stems..... .75
- * NARANJA - A lightly ruffled deep orange. One of the best..... 2.50
- * PAINTED LADY - Huge flower of cinnamon over yellow. Tops for 5 years..... 1.00
- PINK CHARM - Large deep pink with yellow-green throat..... .60
- PORT - Small port wine flowers on well branched stems..... .75
- * POTENTATE - Medium size rosy purple flower. Late summer..... 2.00
- PURPLE SAGE - A Russell hybrid, one of the darkest of the purples..... 1.00
- PURPLE WATERS - A medium size flower of bright wine purple..... .75
- RAJAH - Nasturtium red with garnet eye zone. Profuse bloomer..... .50
- ROSALIND - Beautiful species Daylily of clear rose pink..... 1.50
- * ROYAL RUBY - Striking ruby red with very little yellow in cup..... 1.50
- * RUBY SUPREME - Vigorous flower of bright red with green throat..... .75
- SU-LIN - Delicate toned bi-color of orchid pink and cream. Very dainty.... .75
- TANGERINE - Dark burnt orange with red tinted buds. Early..... .75
- VULCAN - Light maroon red with golden brown mid-rib..... .60



OUR RED, LEMON and GOLD COLLECTION

Lemona
 J.T. Russell
 Rajah
 Earliana
 Bagdad
 Mrs. W.H. Wyman
 Gypsy

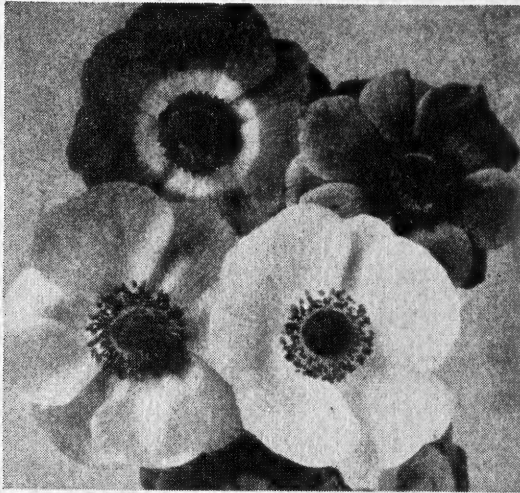
One Plant of each..... \$3.00
 3 Plants of each..... \$8.00

For membership in the Hemerocallis Society address Mrs. Daisy L. Ferrick, Secy.,
 416 Arter St., Topeka, Kansas.

Dues are \$3.50 per year



ANEMONES



ANEMONE DE CAEN

DE CAEN - Large single flowers in mixed colors of red, blue, white, orchid
Per doz. 80¢; per 100 \$5.50

ST. BRIGID - A double form of the Anemone. Also in gorgeous.
Large bulbs: Per doz 85¢; per 100 \$6.00

RANUNCULUS

Beautiful full double flowers in many shades. In severe climates they may be started in pots or planted out as early as possible in the spring. Mixed colors.

Largest size bulbs:

Per doz. \$1.00; per 100 \$7.00

ADDITIONAL DAYLILY LIST

We grow many other varieties of Daylilies. Here is a partial list. You may order any variety from this list for 50¢ each or three of a kind for \$1.00.

Amaryllis	Goldeni
Apricot	Gypsy
Aureole	Hyperion
Bagdad	J. A. Crawford
Bay State	J. R. Mann
Boutonniere	J. T. Russell
Buckeye	Lemona
Cinnabar	Mandarin
Cressida	Midendorffii
Dr. Regel	Mrs. W. H. Wyman
Earliana	Ophir
Flava	Tejas
Florham	Thunbergii
Fulva Maculata	Wau-Bun
Golden Dream	

CALLA LILIES

WHITE CALLA (*Zantedeschia Aethiopica*) Large white flowers on 3 to 5 foot stems. Luxuriant dark green foliage. In a warm climate they may be left in the ground for a number of years; in colder sections they may be lifted in the fall and stored until spring or flowered in the house.

Each 35¢

YELLOW CALLA (*Z. Elliottiana*) A beautiful golden yellow blossom, foliage dark green spotted silvery white. Very showy. Height 2 1/2 to 3 feet

Each 35¢

PINK CALLA (*Z. Rehmannii*) Small dainty flowers in lovely rose pink; leaves slender and of lighter green than *C. Aethiopica*.

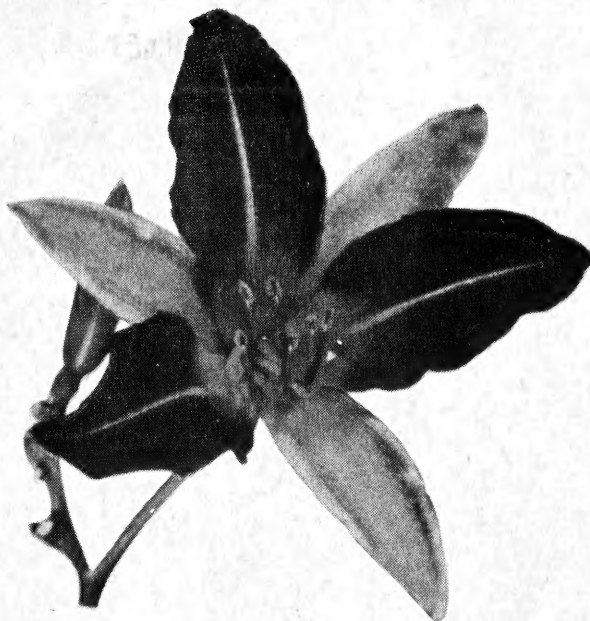
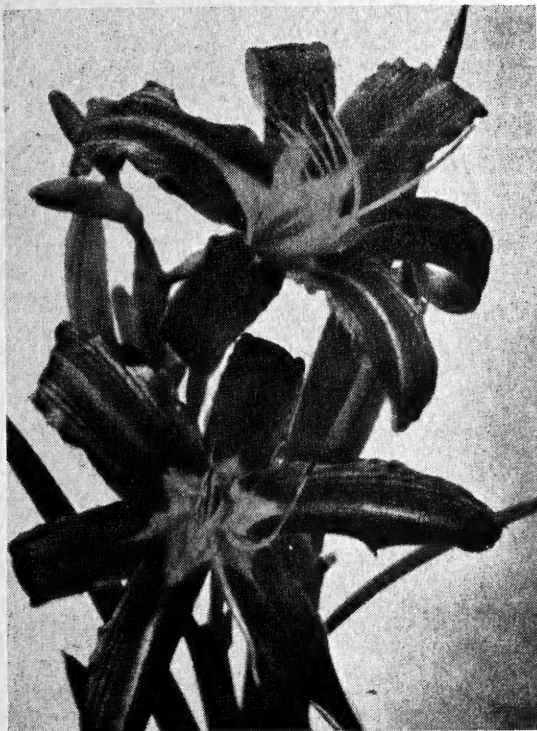
Each 50¢

BLACK CALLA (*Arum Pictum*) Flower a deep purple, almost black, no scent. Blooms in the spring. Dormant shipping season July to November.

Each 60¢

SPOTTED LEAVED WHITE CALLA (*Maculata*) Flowers white, leaves beautifully spotted silvery white.

Each 70¢



DAYLILY CULTURE

DAYLILIES are of the easiest culture being practically without pests and diseases. They bloom very freely and many of them at a time when other flowers are out of season. After they become established they will grow without fertilizer and with a minimum of watering. However a good organic fertilizer and watering during the dry season are of benefit in increasing the size of the flowers. Daylilies in the past were predominantly yellow. Now in addition to the many shades of yellow, they come in dainty pinks and coral, in many shades of rose, red and purple, as well as two-toned, bi-colored and with various rings, blotches and other contrasting markings. Daylily culture has become a fascinating hobby to many people who collect and grow and in some instances hybridize, there being some 5,000 named varieties at the present time with thousands of un-named seedlings in the trial stage. No matter how few or how many you decide to plant you will not be disappointed. They are the most dependable of flowering plants and always make a satisfactory showing.

WILSHIRE GARDENS

TERMS

We prepay delivery charges on all orders amounting to \$3.00 or more. On smaller orders add 50¢ for cost of handling. Please remit by check or Money Order. Stamps on small orders only. Cash, unless letter is registered, sent at customer's risk. No C.O.D. orders accepted. Washington customers kindly remember sales tax. NO tax on out of state orders.

WILSHIRE GARDENS
HOQUIAM, WASHINGTON

Sec. 34.66 P. L. & R.
U. S. POSTAGE
PAID
Hoquiam, Wash.
PERMIT NO. 42

HEMEROCALLIS
TUBEROUS BEGONIA
AND OTHER SUMMER FLOWERING

Return Postage Guaranteed

U. S. DEPARTMENT OF AGRICULTURE
LIBRARY
WASHINGTON 25, D. C.

OFFICIAL BUSINESS
PRINTED MATTER

PENALTY FOR PRIVATE USE TO AVOID
PAYMENT OF POSTAGE, \$300
(GPO)

U.S. Dept. of Agriculture
Library
on 25, D.C.

